

Overview



VL2600 SE Wash

Output 24248 lm

Measurement details

Zoom DMX 0/0

Edge DMX N/A

Date 5/2/2024

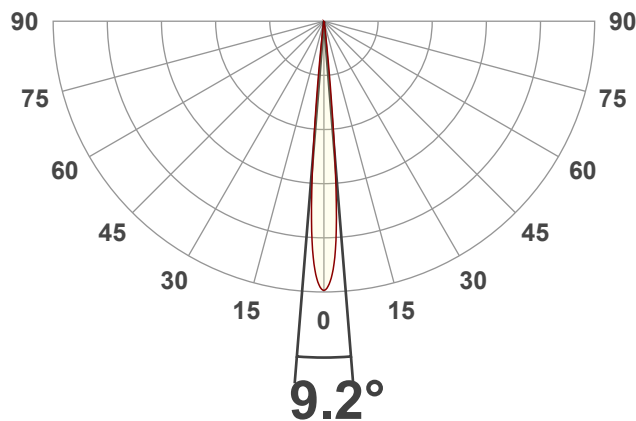
Power 637.4 W

120 V / 5.48 A

Frequency 60 Hz

Temperature 24°C +/-3°C

Measurement No. VFR-240502-0224-MS

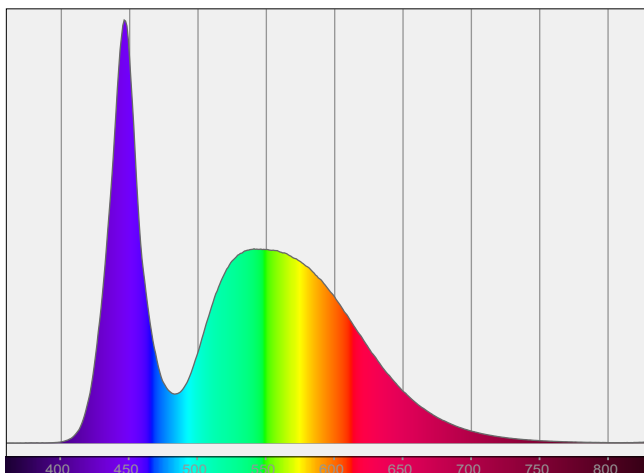


Beam angles

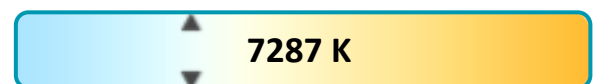
Beam angle (50%) 9.2°

Field Angle (10%) 13°

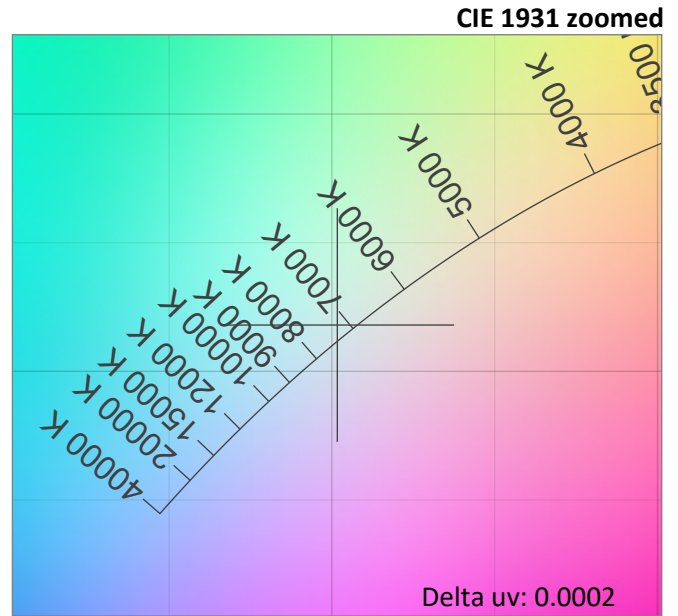
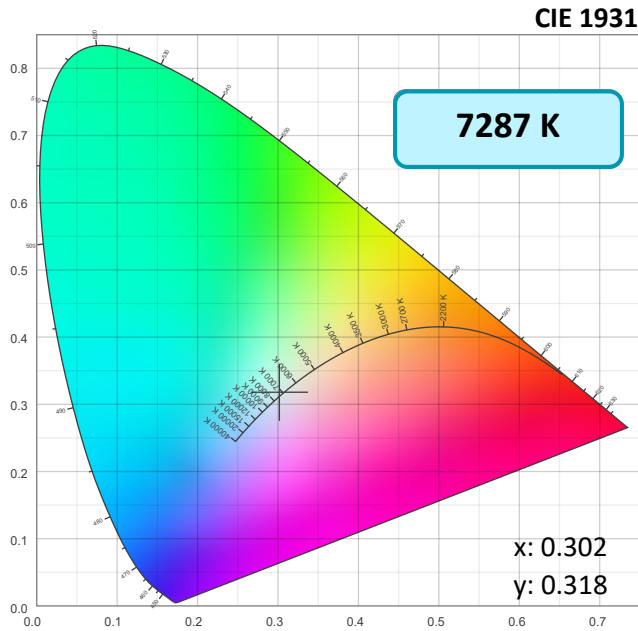
Cut-off Angle (2.5%) 15.5°



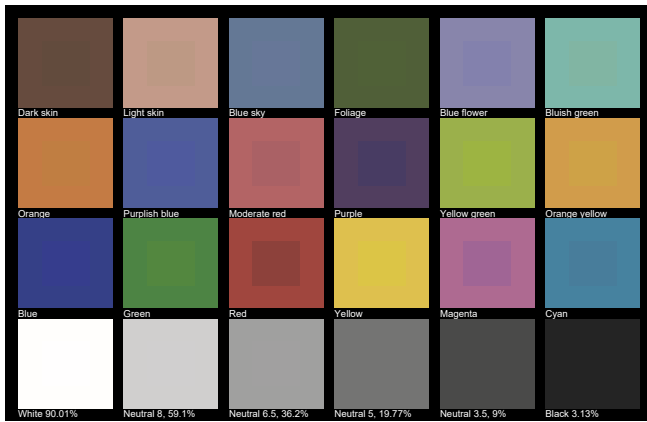
Color



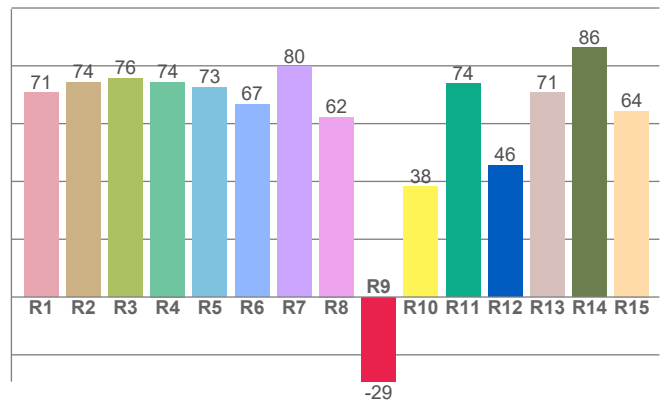
Colorimetry



TLCI: 50



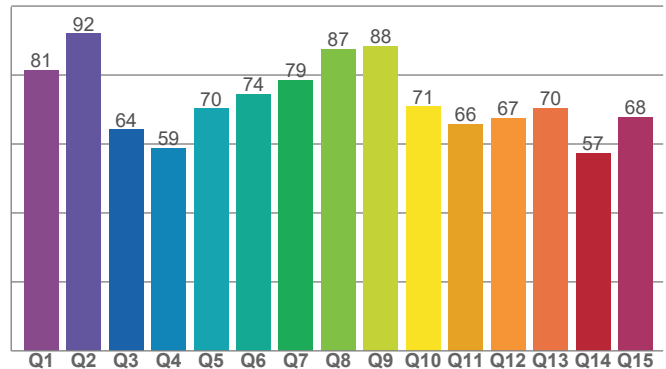
Color Rendering Index (CIE 1995) CRI: 72.1 (R1-R8)



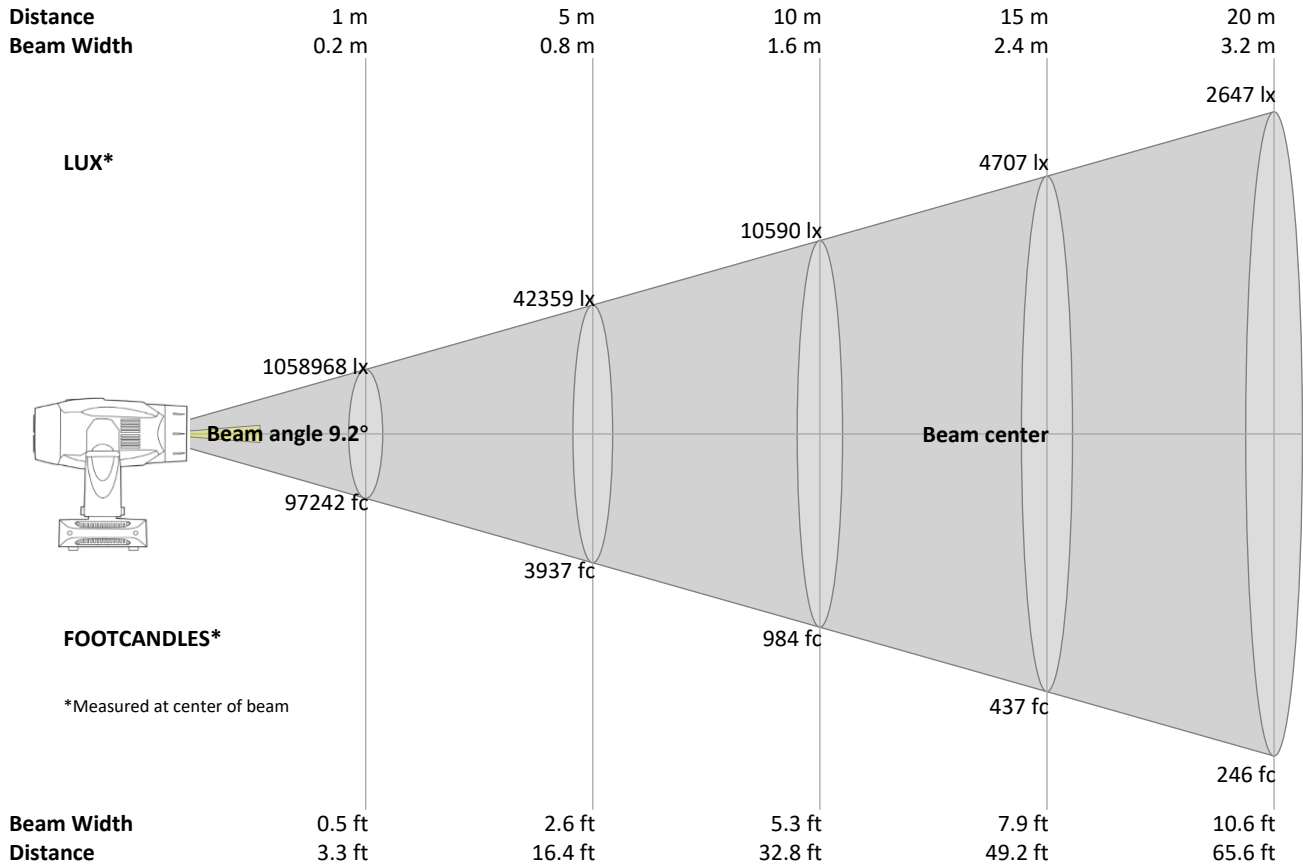
TLCI Qa values

Dark skin Q1 65.83	Light skin Q2 58.70	Blue sky Q3 63.20	Foliage Q4 89.71	Blue flower Q5 65.26	Bluish green Q6 66.38
Orange Q7 55.02	Purplish blue Q8 81.00	Moderate red Q9 62.93	Purple Q10 39.84	Yellow green Q11 78.88	Orange yellow Q12 42.89
Blue Q13 75.39	Green Q14 67.70	Red Q15 30.38	Yellow Q16 62.36	Magenta Q17 25.30	Cyan Q18 62.93

Color Quality Scale by reference color

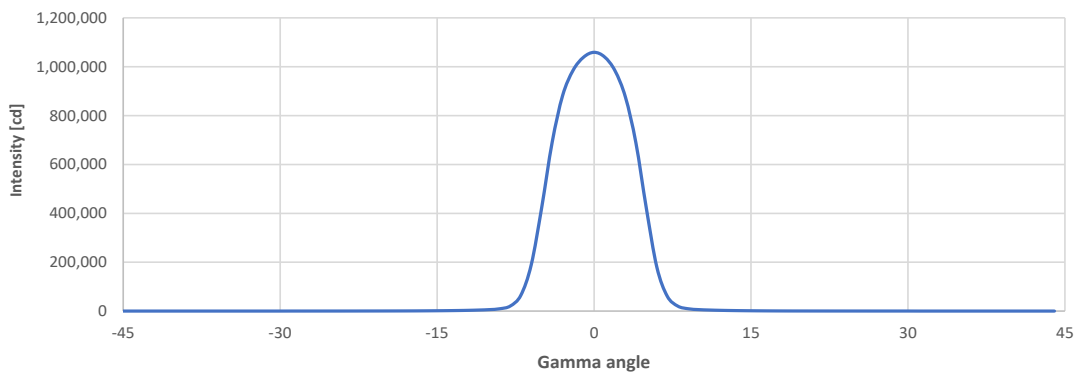


Beam Details



Beam center illuminances from 1 – 20 m (3.3 – 65.6 ft)

1	2	3	4	5	6	7	8	9	10	11	12	13	14	15	16	17	18	19	20	m
3.3	6.6	9.8	13.1	16.4	19.7	23	26.2	29.5	32.8	36.1	39.4	42.7	45.9	49.2	52.5	55.8	59.1	62.3	65.6	ft
1058968	264742	117663	66185	42359	29416	21612	16546	13074	10590	8752	7354	6266	5403	4707	4137	3664	3268	2933	2647	lux
98381.3	24595.3	10931.3	6148.8	3935.3	2732.8	2007.8	1537.2	1214.6	983.8	813.1	683.2	582.1	501.9	437.3	384.3	340.4	303.6	272.5	246	fc

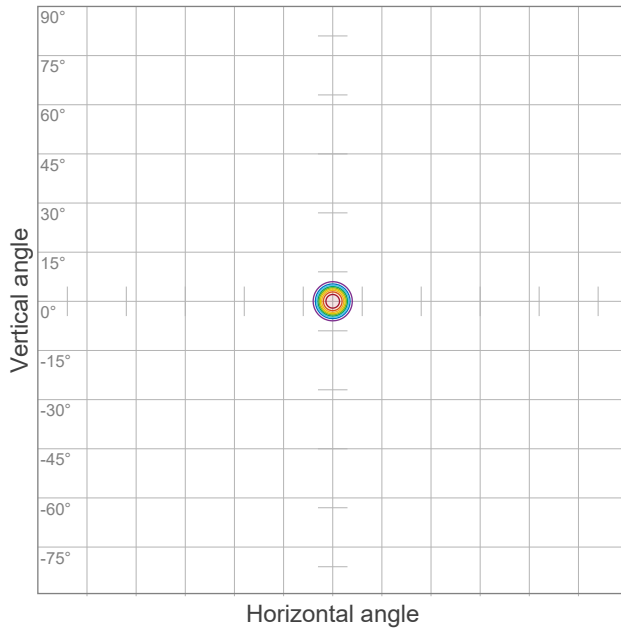


Beam angle 50% 9.20

Field angle 10% 13.00

Cutoff angle 2.5% 15.50

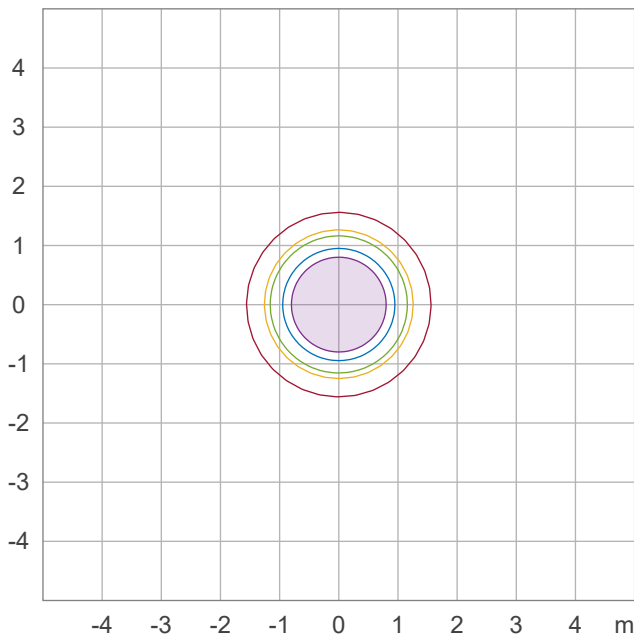
Iso-intensity Diagram (Iso-candela)



90 %	953070.8 cd
80 %	847174.1 cd
70 %	741277.3 cd
60 %	635380.6 cd
50 %	529483.8 cd
40 %	423587.1 cd
30 %	317690.3 cd
20 %	211793.5 cd
10 %	105896.8 cd

Peak intensity: 1058968.0 cd
Number of c-planes: 2

Iso-illuminance Diagram (Iso-lux)



1.0 %	105.9 lx
5.0 %	529.5 lx
10.0 %	1059.0 lx
30.0 %	3176.9 lx
50.0 %	5294.8 lx

Peak illuminance: 10589.7 lx
Mounting height: 10.0 m
Number of c-planes: 2

© 2024 Signify Holding. All rights reserved. All trademarks are owned by Signify Holding or their respective owners. The information provided herein is subject to change, without notice. Signify does not give any representation or warranty as to the accuracy or completeness of the information included herein and shall not be liable for any action in reliance thereon. The information presented in this document is not intended as any commercial offer and does not form part of any quotation or contract, unless otherwise agreed by Signify. Data subject to change

Overview

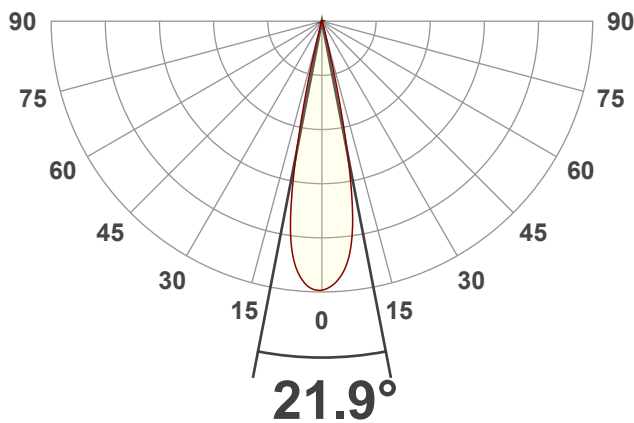


VL2600 SE Wash

Output 22816 lm

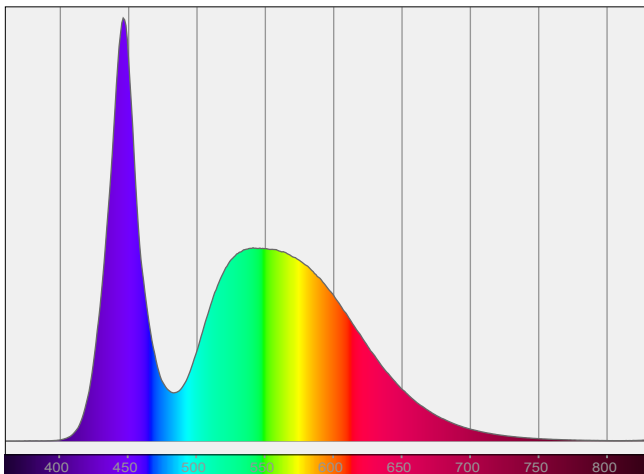
Measurement details

Zoom DMX	125/125
Edge DMX	N/A
Date	5/3/2024
Power	637.4 W
	120 V / 5.48 A
Frequency	60 Hz
Temperature	24°C +/-3°C
Measurement No.	VFR-240503-0229-MS

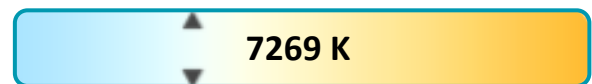


Beam angles

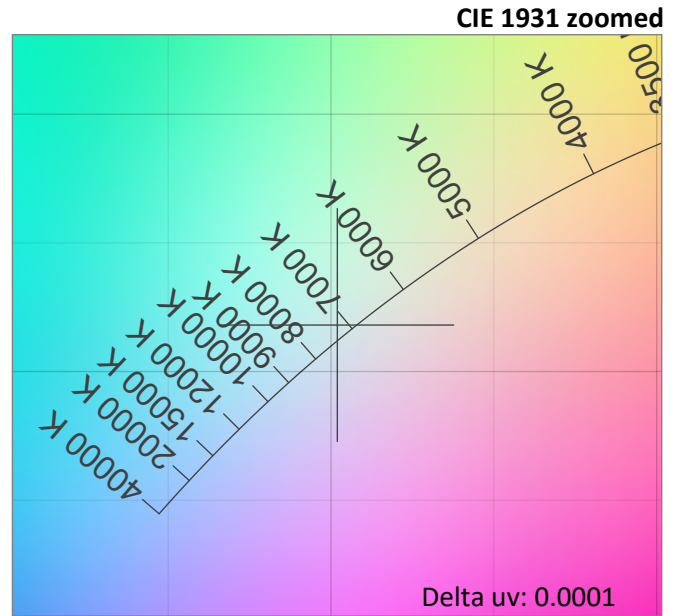
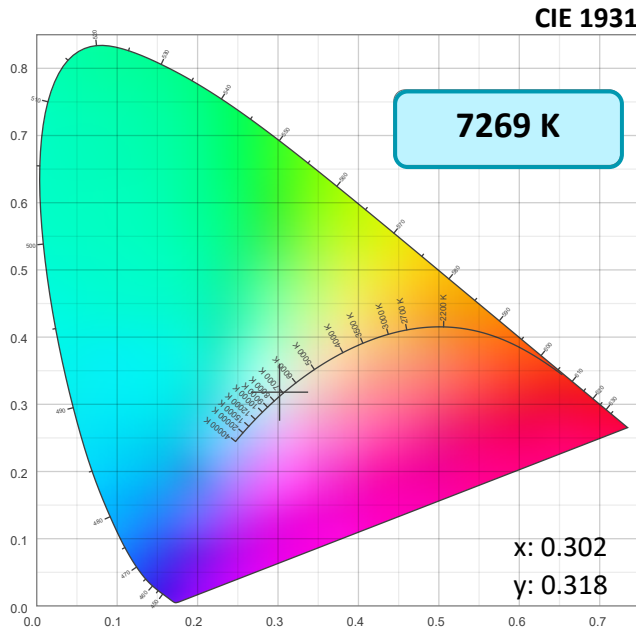
Beam angle (50%)	21.9°
Field Angle (10%)	28.4°
Cut-off Angle (2.5%)	32.4°



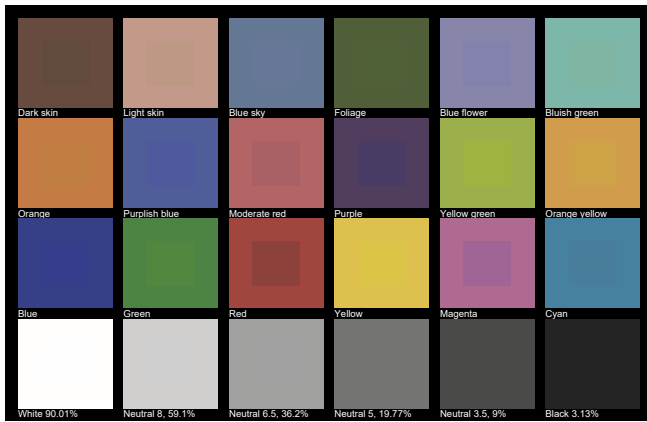
Color



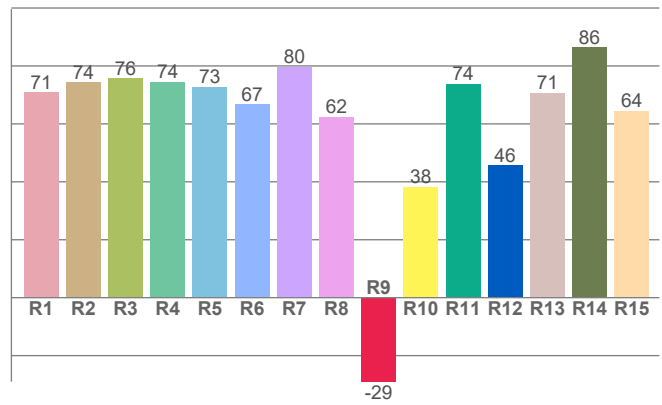
Colorimetry



TLCI: 50



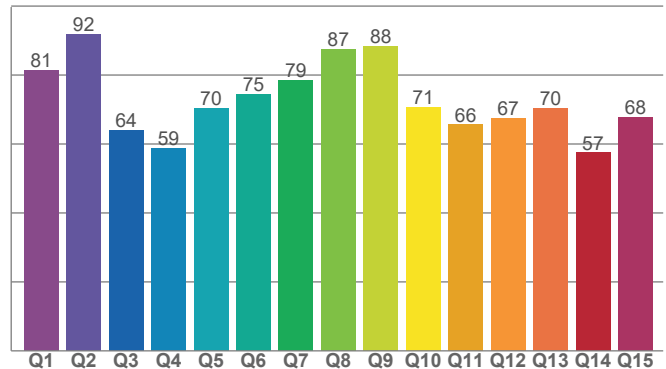
Color Rendering Index (CIE 1995) CRI: 72.1 (R1-R8)



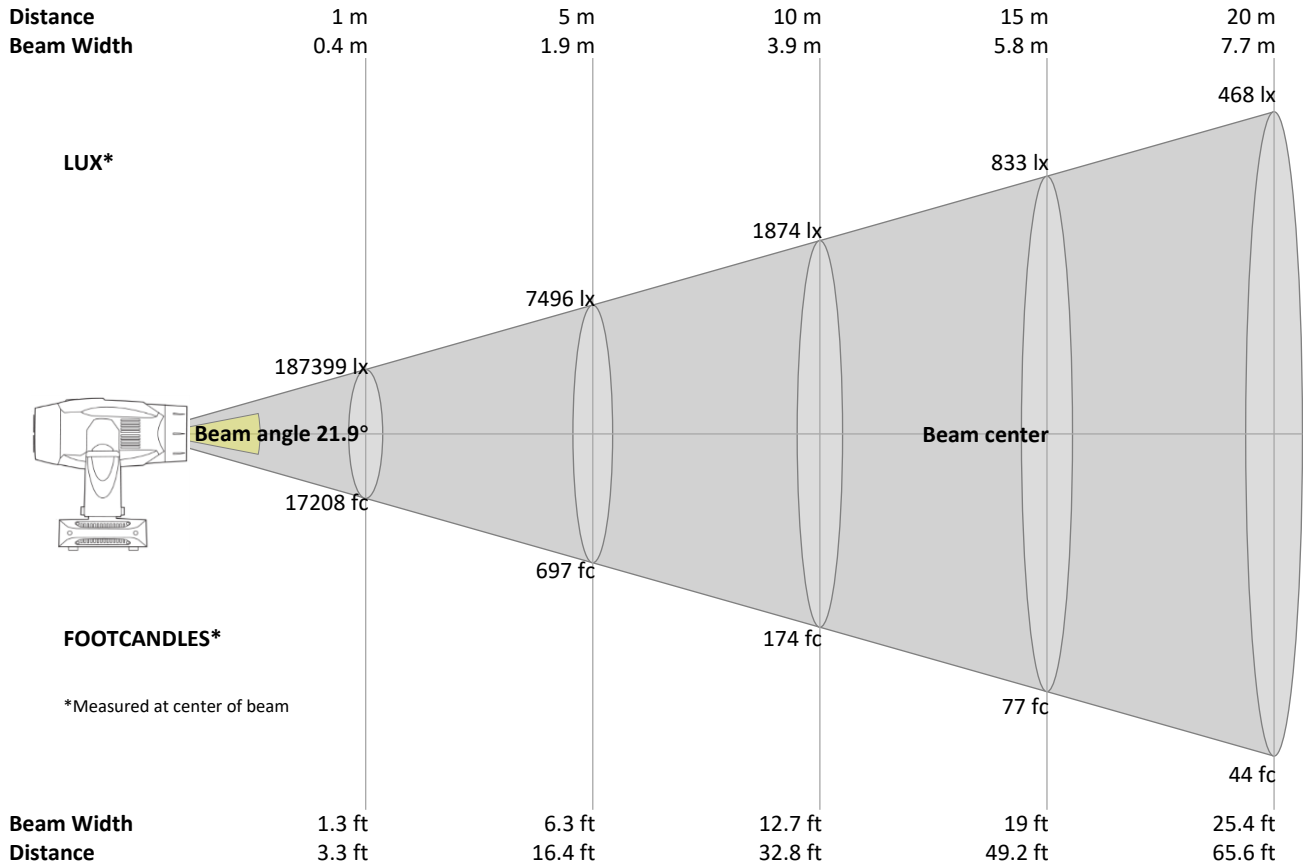
TLCI Qa values

Dark skin Q1 65.93	Light skin Q2 58.44	Blue sky Q3 63.15	Foliage Q4 89.68	Blue flower Q5 65.23	Bluish green Q6 65.87
Orange Q7 55.13	Purplish blue Q8 80.97	Moderate red Q9 63.08	Purple Q10 39.68	Yellow green Q11 78.79	Orange yellow Q12 42.98
Blue Q13 75.38	Green Q14 67.61	Red Q15 30.51	Yellow Q16 62.38	Magenta Q17 25.28	Cyan Q18 63.32

Color Quality Scale by reference color

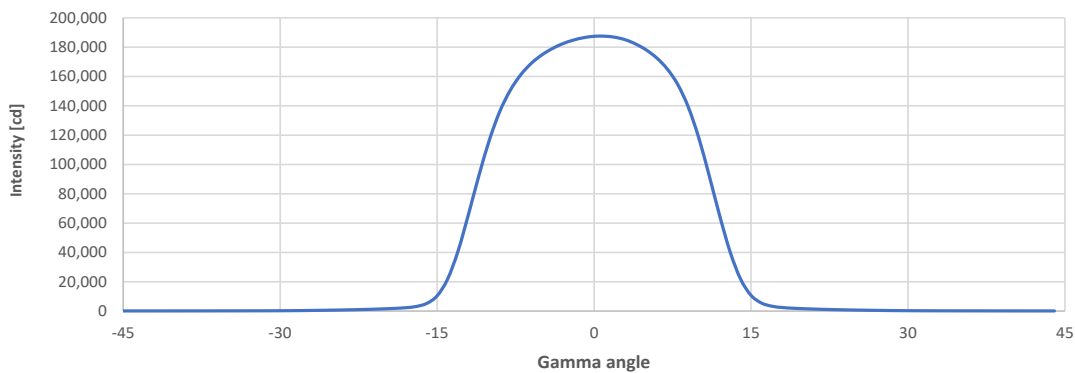


Beam Details



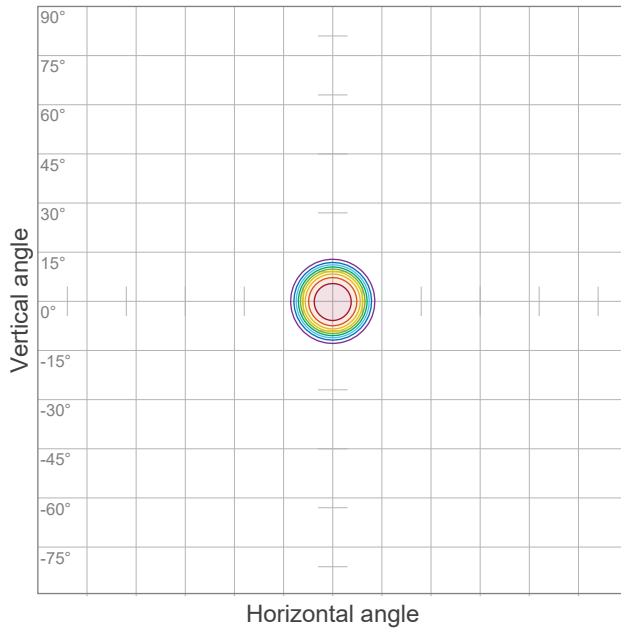
Beam center illuminances from 1 – 20 m (3.3 – 65.6 ft)

1	2	3	4	5	6	7	8	9	10	11	12	13	14	15	16	17	18	19	20	m
3.3	6.6	9.8	13.1	16.4	19.7	23	26.2	29.5	32.8	36.1	39.4	42.7	45.9	49.2	52.5	55.8	59.1	62.3	65.6	ft
187399	46850	20822	11712	7496	5206	3824	2928	2314	1874	1549	1301	1109	956	833	732	648	578	519	468	lux
17409.9	4352.5	1934.4	1088.1	696.4	483.6	355.3	272	214.9	174.1	143.9	120.9	103	88.8	77.4	68	60.2	53.7	48.2	43.5	fc



Beam angle 50%	21.90
Field angle 10%	28.40
Cutoff angle 2.5%	32.40

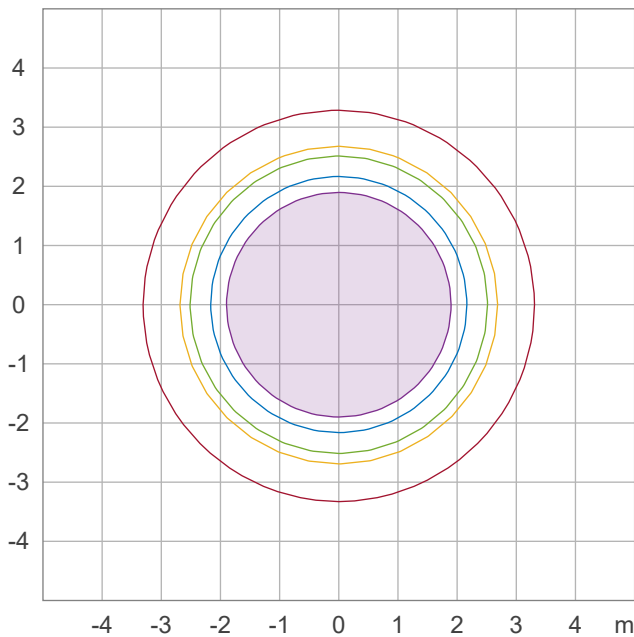
Iso-intensity Diagram (Iso-candela)



90 %	168736.6 cd
80 %	149988.1 cd
70 %	131239.6 cd
60 %	112491.1 cd
50 %	93742.6 cd
40 %	74994.1 cd
30 %	56245.5 cd
20 %	37497.0 cd
10 %	18748.5 cd

Peak intensity: 187485.1 cd
Number of c-planes: 2

Iso-illuminance Diagram (Iso-lux)



1.0 %	18.7 lx
5.0 %	93.7 lx
10.0 %	187.4 lx
30.0 %	562.2 lx
50.0 %	937.0 lx

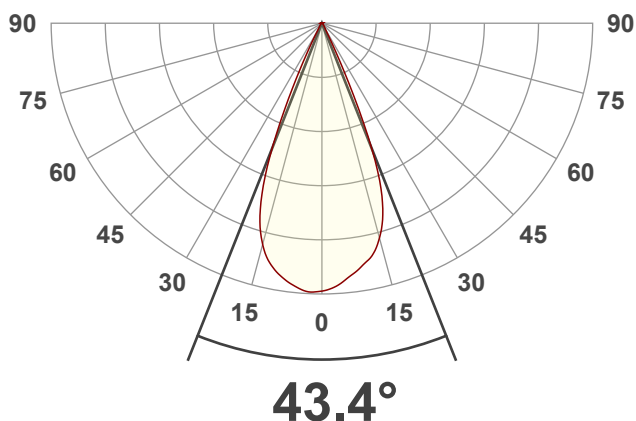
Peak illuminance: 1874.0 lx
Mounting height: 10.0 m
Number of c-planes: 2

© 2024 Signify Holding. All rights reserved. All trademarks are owned by Signify Holding or their respective owners. The information provided herein is subject to change, without notice. Signify does not give any representation or warranty as to the accuracy or completeness of the information included herein and shall not be liable for any action in reliance thereon. The information presented in this document is not intended as any commercial offer and does not form part of any quotation or contract, unless otherwise agreed by Signify. Data subject to change

Overview



VL2600 SE Wash Wide



Output 25943 lm

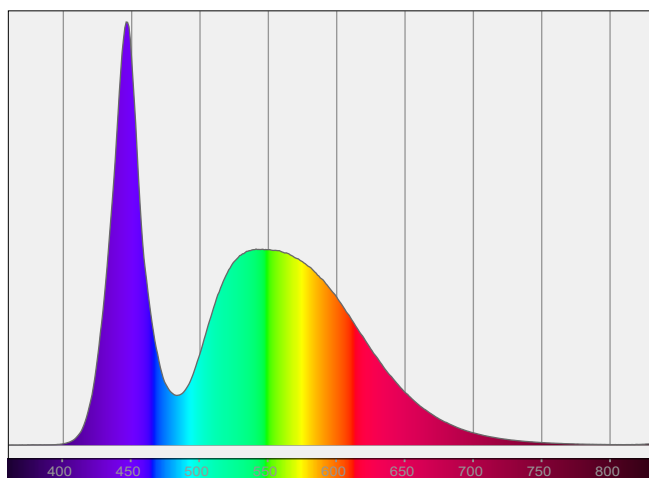
Measurement details

Zoom DMX 255/255
 Edge DMX N/A
 Date 5/2/2024
 Power 637.4 W
 120 V / 5.48 A

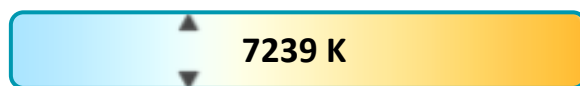
Frequency 60 Hz
 Temperature 24°C +/-3°C
 Measurement No. VFR-240502-0228-MS

Beam angles

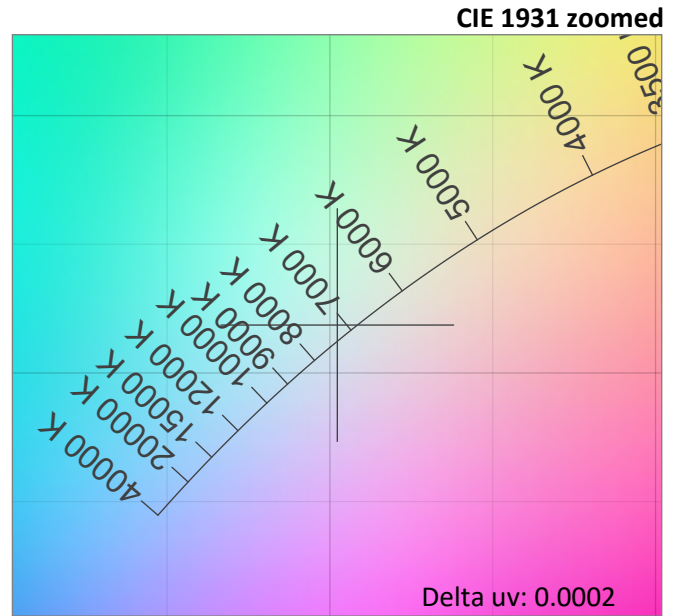
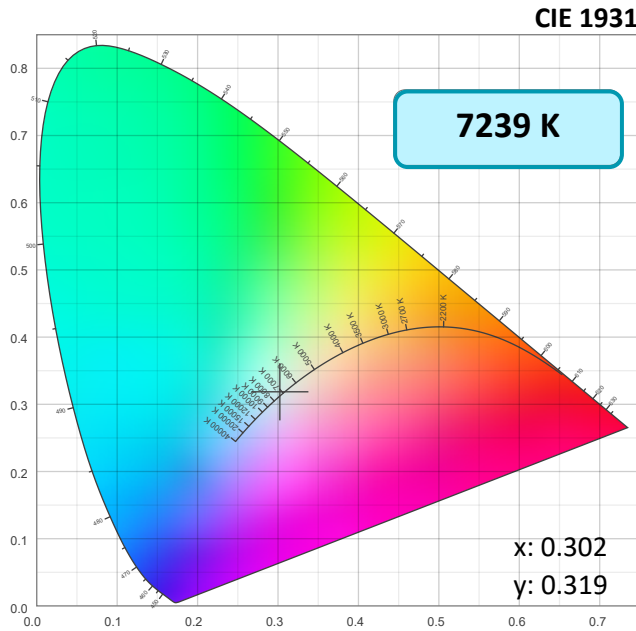
Beam angle (50%) 43.4°
 Field Angle (10%) 53.4°
 Cut-off Angle (2.5%) 62.9°



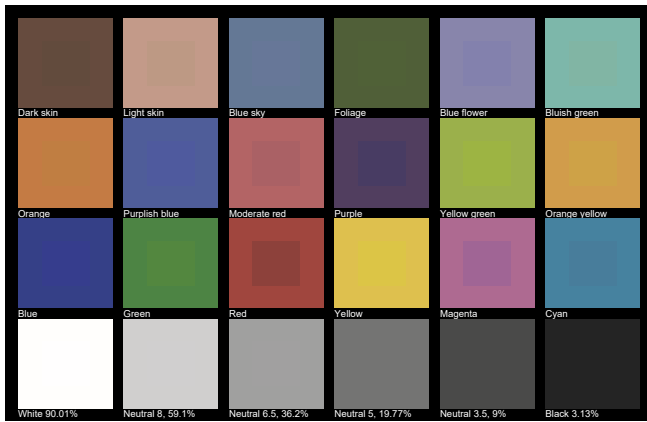
Color



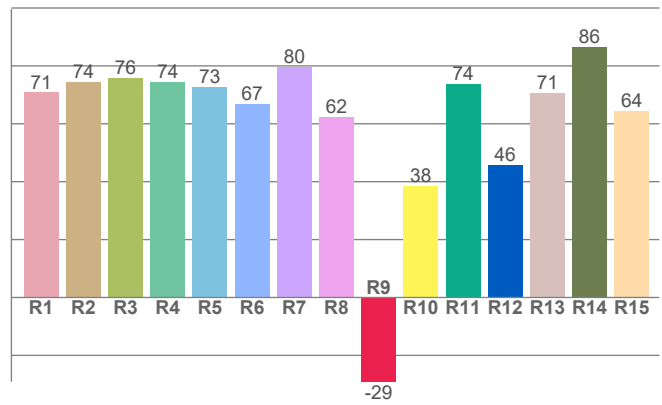
Colorimetry



TLCI: 50



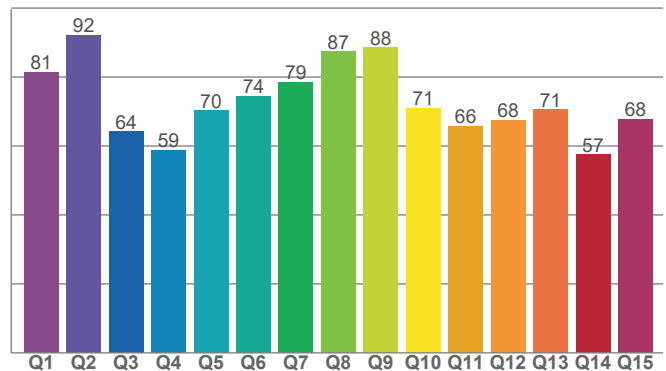
Color Rendering Index (CIE 1995) CRI: 72.1 (R1-R8)



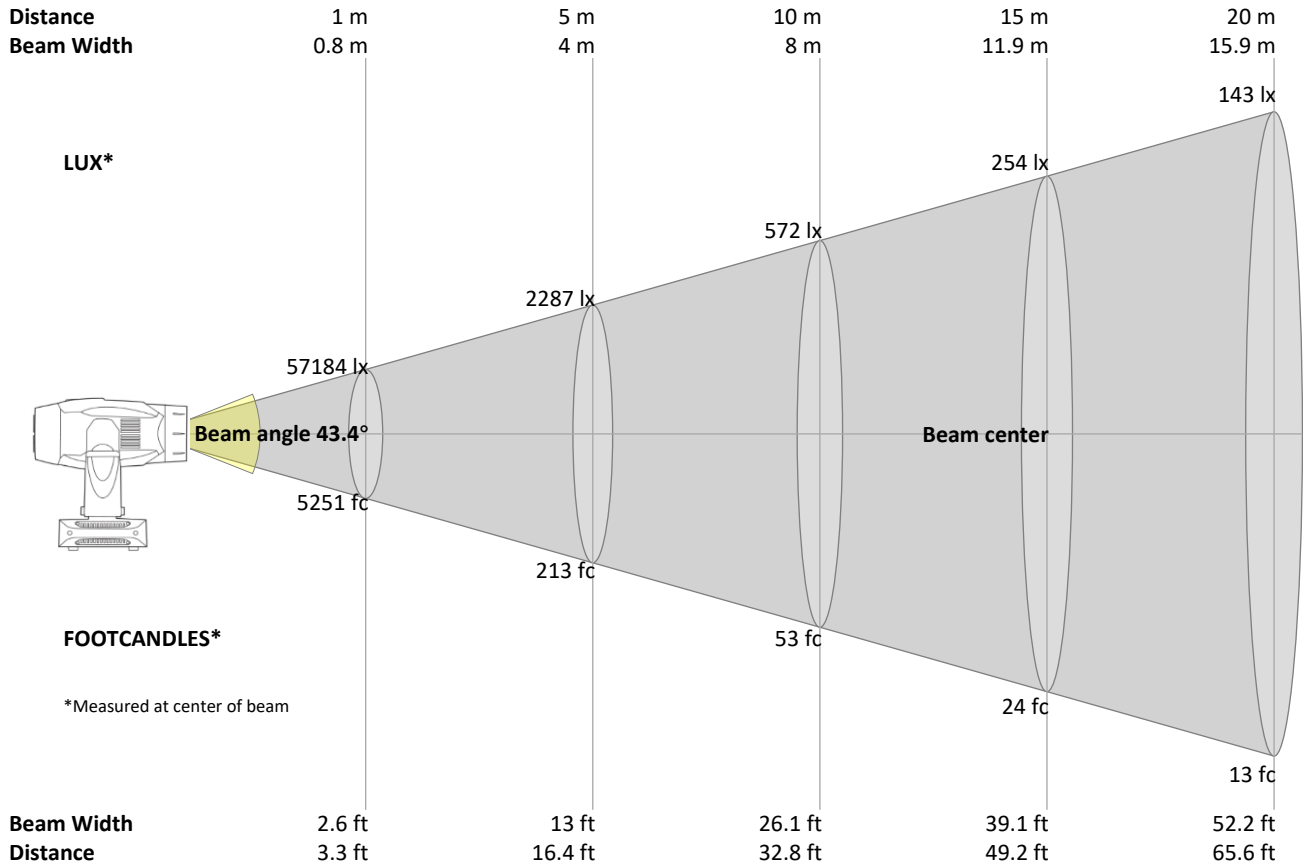
TLCI Qa values

Dark skin Q1 65.92	Light skin Q2 59.03	Blue sky Q3 63.33	Foliage Q4 89.79	Blue flower Q5 65.35	Bluish green Q6 66.70
Orange Q7 54.94	Purplish blue Q8 81.05	Moderate red Q9 63.26	Purple Q10 40.02	Yellow green Q11 78.99	Orange yellow Q12 42.88
Blue Q13 75.44	Green Q14 67.92	Red Q15 30.59	Yellow Q16 62.42	Magenta Q17 25.48	Cyan Q18 62.69

Color Quality Scale by reference color

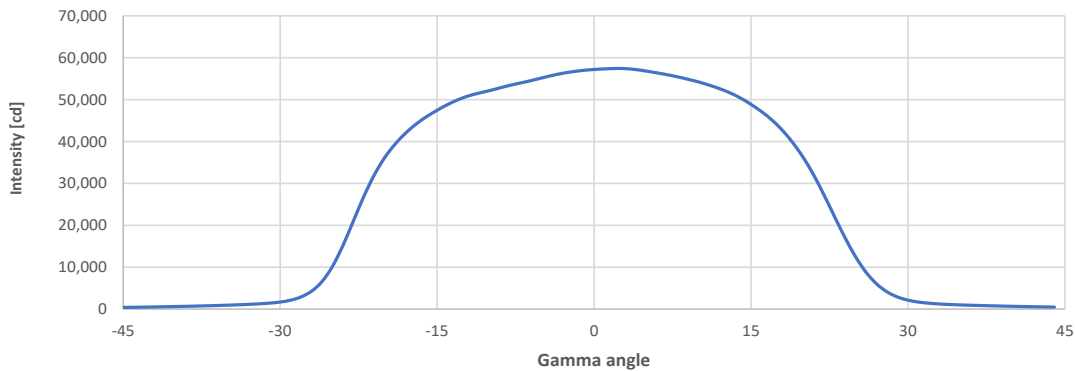


Beam Details



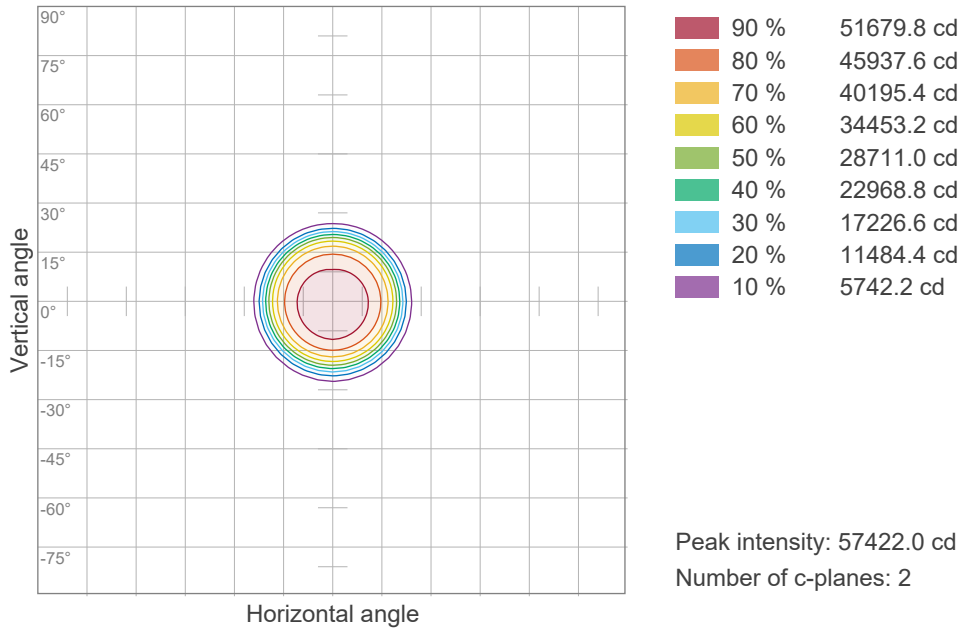
Beam center illuminances from 1 – 20 m (3.3 – 65.6 ft)

1	2	3	4	5	6	7	8	9	10	11	12	13	14	15	16	17	18	19	20	m
3.3	6.6	9.8	13.1	16.4	19.7	23	26.2	29.5	32.8	36.1	39.4	42.7	45.9	49.2	52.5	55.8	59.1	62.3	65.6	ft
57184	14296	6354	3574	2287	1588	1167	893	706	572	473	397	338	292	254	223	198	176	158	143	lux
5312.5	1328.1	590.3	332	212.5	147.6	108.4	83	65.6	53.1	43.9	36.9	31.4	27.1	23.6	20.8	18.4	16.4	14.7	13.3	fc

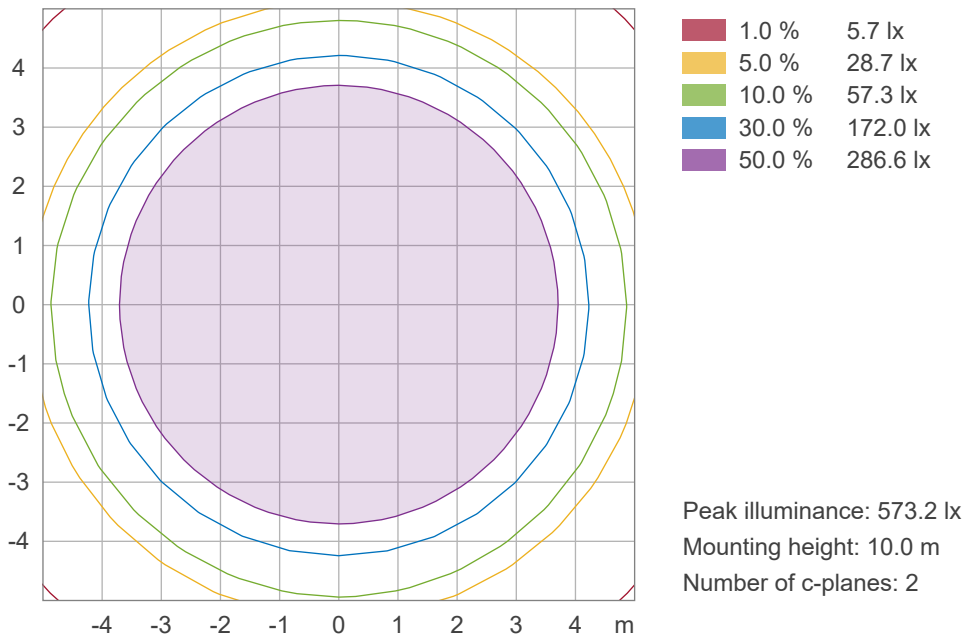


Beam angle 50% 43.40
Field angle 10% 53.40
Cutoff angle 2.5% 62.90

Iso-intensity Diagram (Iso-candela)



Iso-illuminance Diagram (Iso-lux)



© 2024 Signify Holding. All rights reserved. All trademarks are owned by Signify Holding or their respective owners. The information provided herein is subject to change, without notice. Signify does not give any representation or warranty as to the accuracy or completeness of the information included herein and shall not be liable for any action in reliance thereon. The information presented in this document is not intended as any commercial offer and does not form part of any quotation or contract, unless otherwise agreed by Signify. Data subject to change